



1. EAST BUILDING EAST FACADE



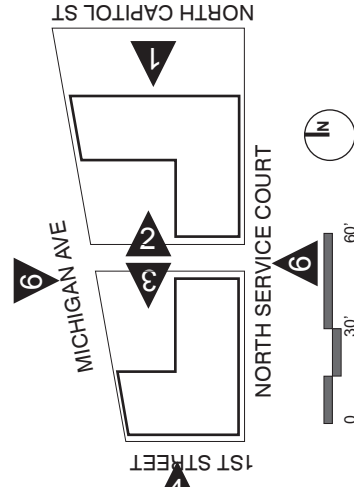
3. WEST BUILDING EAST FACADE



2. EAST BUILDING WEST FACADE



4. WEST BUILDING WEST FACADE



**ZONING COMMISSION**  
 District of Columbia  
 CASE NO.13-14  
 EXHIBIT NO.32A2A54



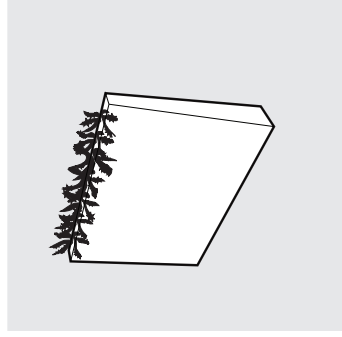
5. NORTH ELEVATION



6. SOUTH ELEVATION

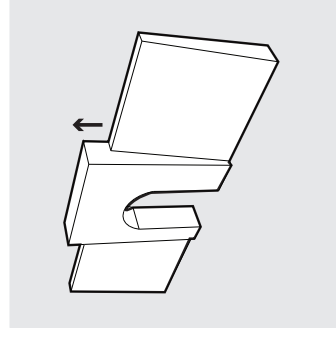
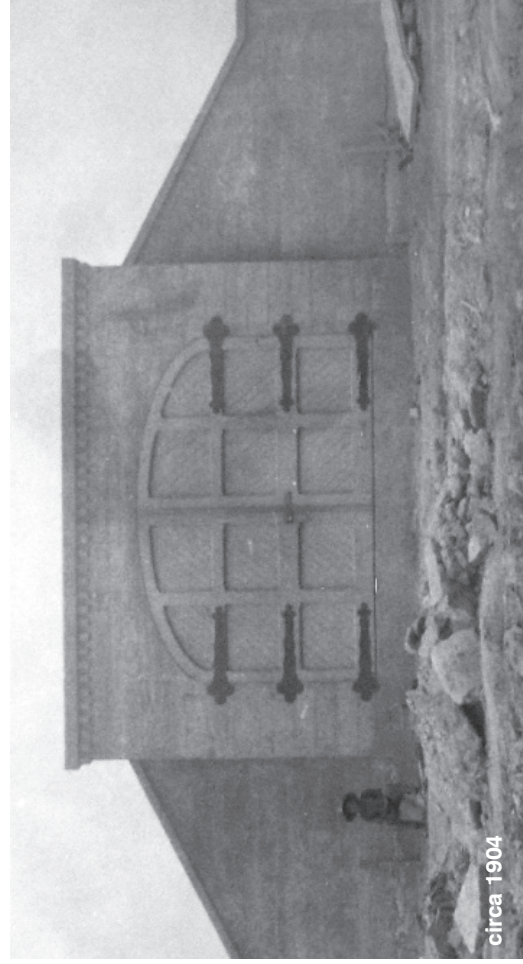
NOTES

1. Flexibility is requested to vary the final selection of the exterior materials within the color ranges and general material types proposed, based on availability at the time of construction without reducing the quality of materials.
2. Flexibility is requested to make minor refinements to exterior details and dimensions, including belt courses, sills, bases, cornices, railings and trim, or any other changes to comply with the building codes or that are otherwise necessary to obtain a final building permit.



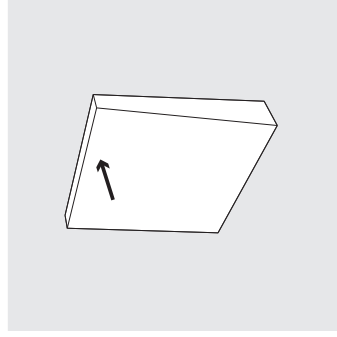
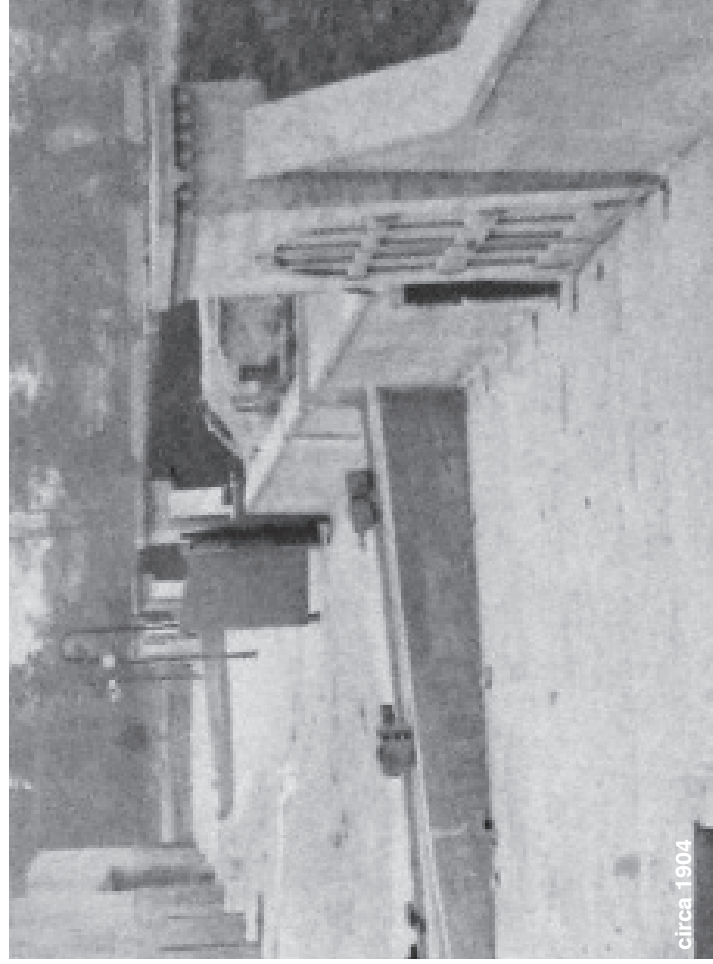
OVERHANGING PLANTS

(A)



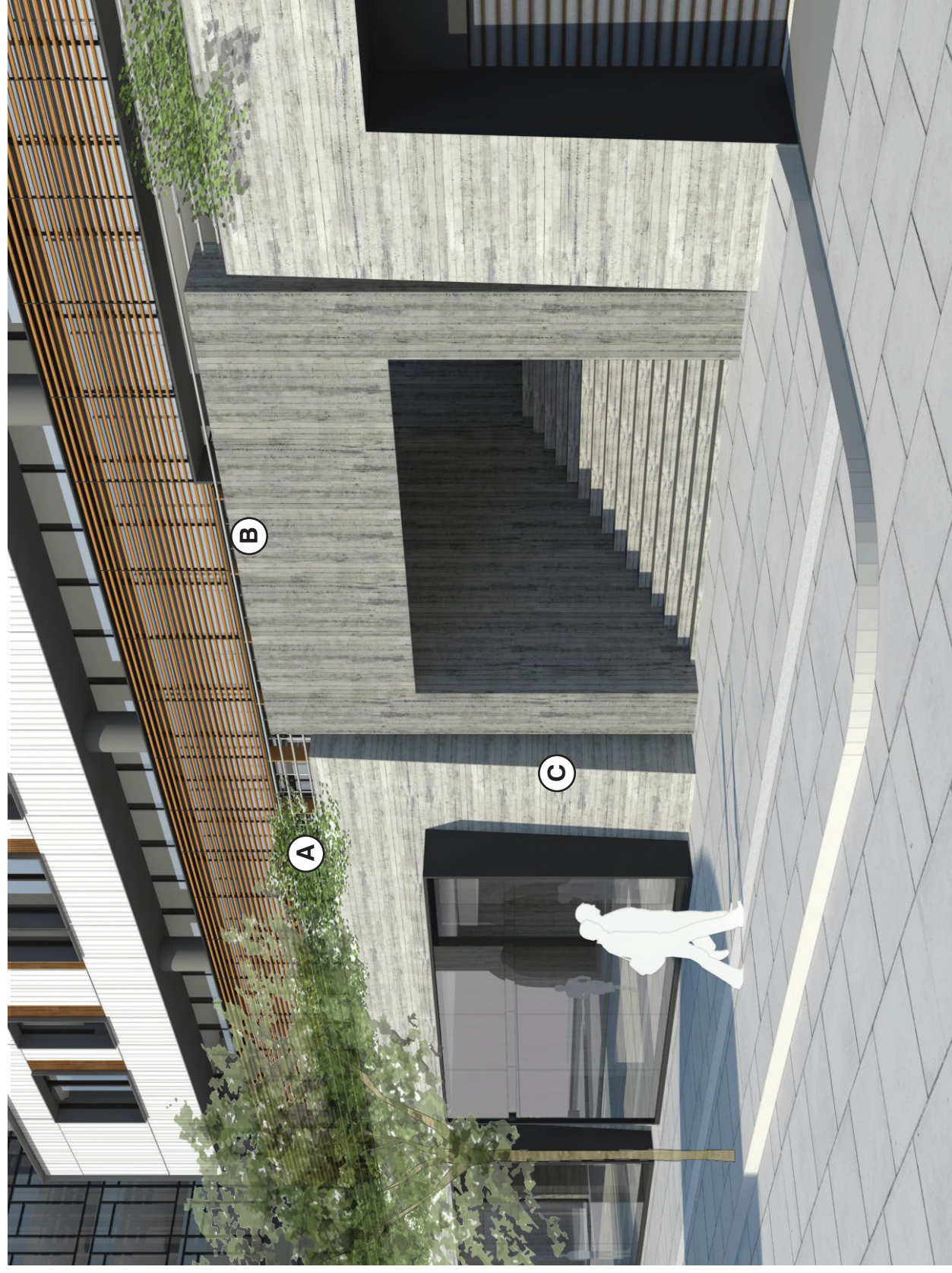
ACCENTED ENTRY

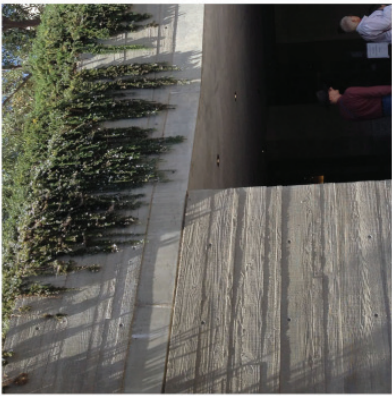
(B)



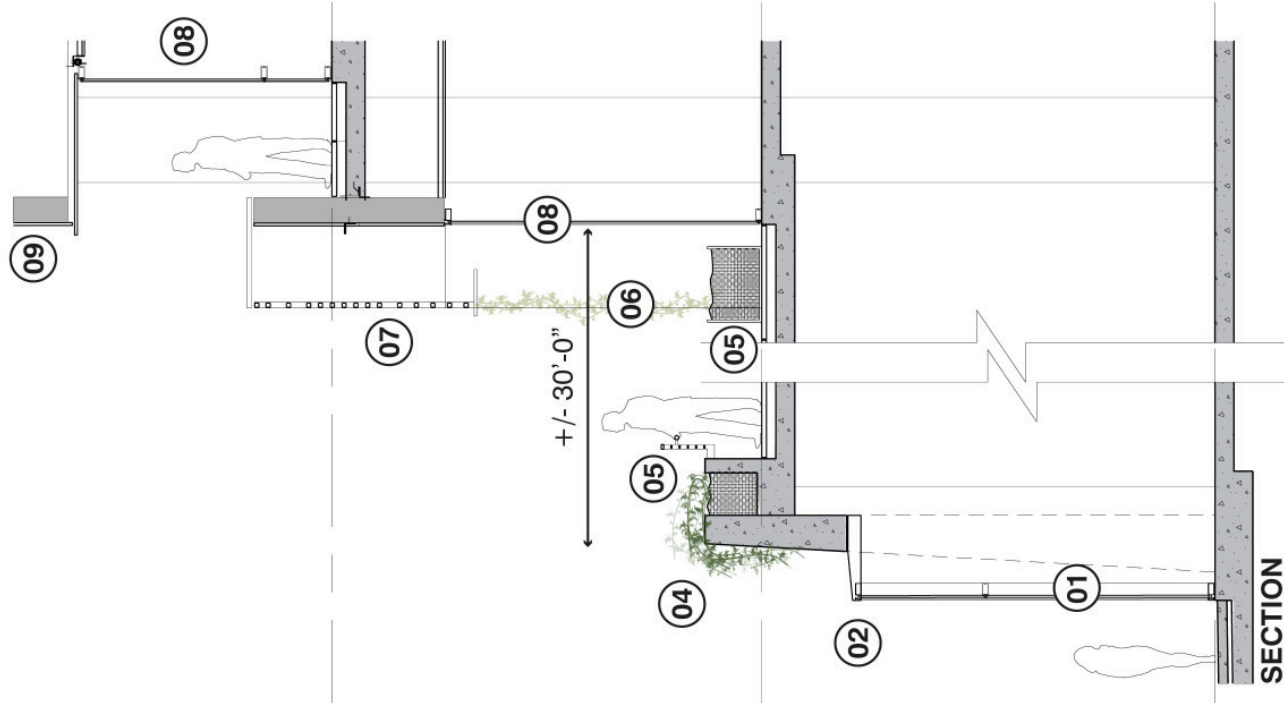
CANTED CELL WALL

(C)





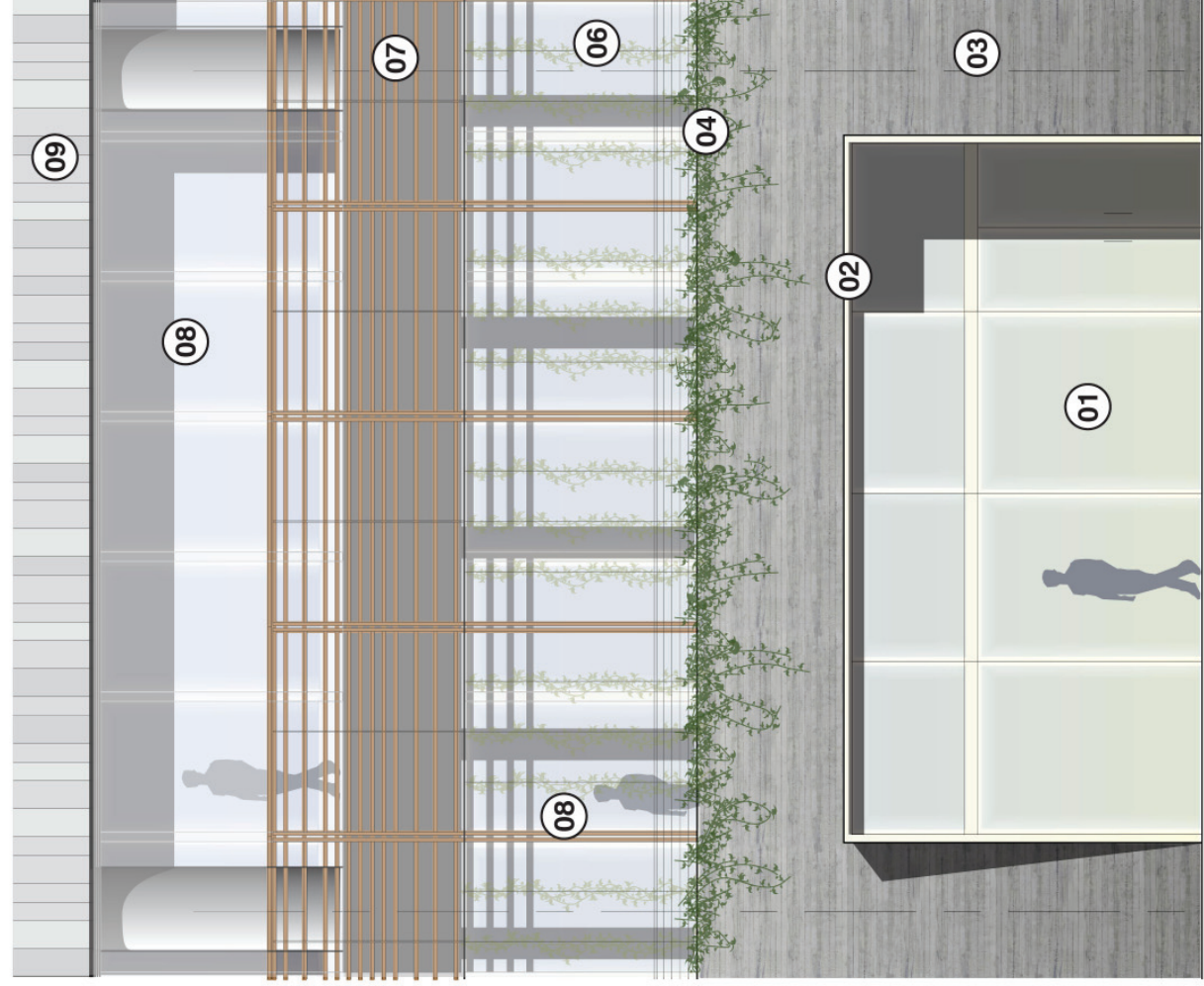
**MATERIAL PRECEDENTS**



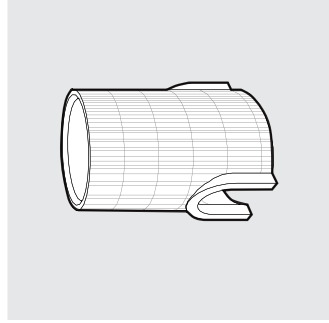
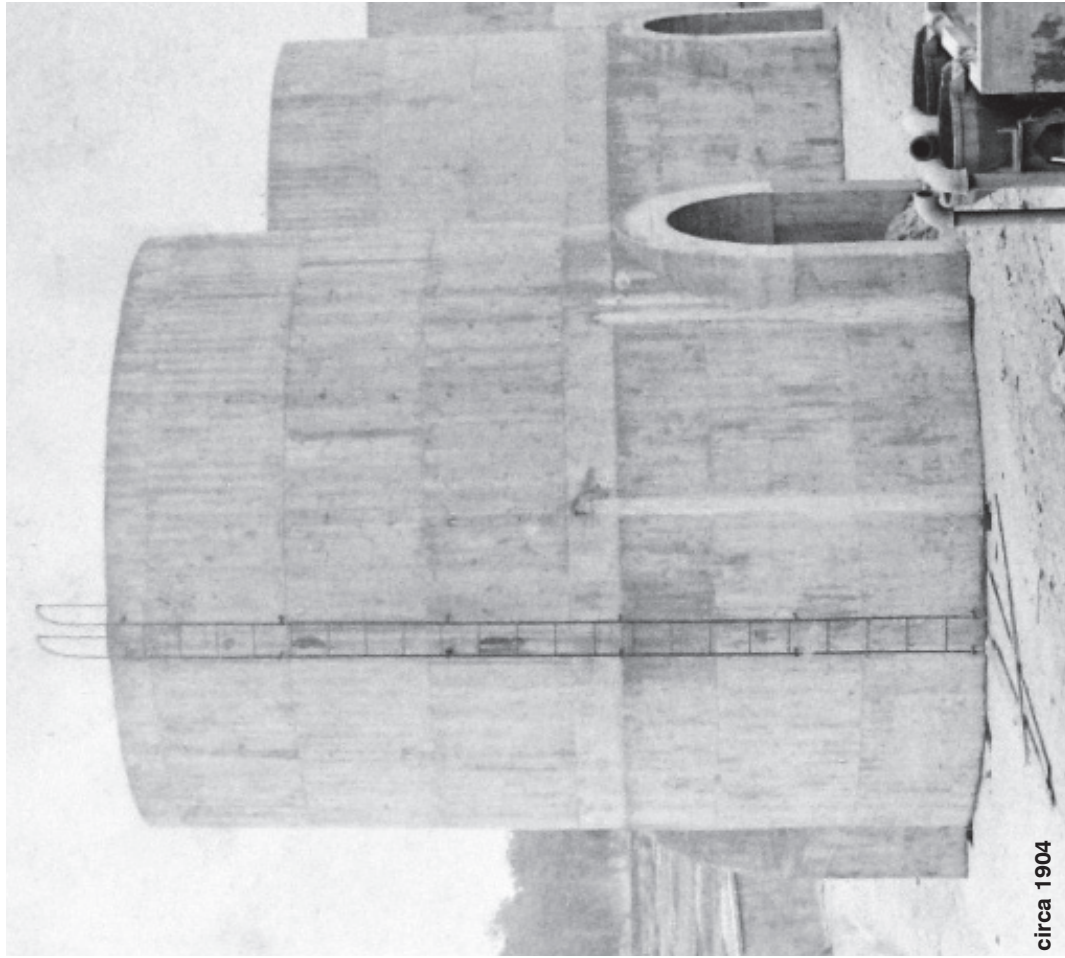
- 09 TERRACOTTA PANEL
- 08 CLEAR GLASS WITH LOW-E COATING
- 07 PROJECTED FRAME, WOOD OR TERRACOTTA BAGUETTES
- 06 VINES GROWING UP CABLES
- 05 PLANTER
- 04 OVERHANGING PLANTS
- 03 BOARD FORMED CONCRETE
- 02 METAL FRAME SURROUND
- 01 GLAZED STOREFRONT

**NOTES**

1. Flexibility is requested to vary the final selection of the exterior materials within the color ranges and general material types proposed, based on availability at the time of construction without reducing the quality of materials.
2. Current retail storefront design is conceptual and for illustrative purposes only. Final designs will vary as tenant specific articulation, signage and diversity is designed.

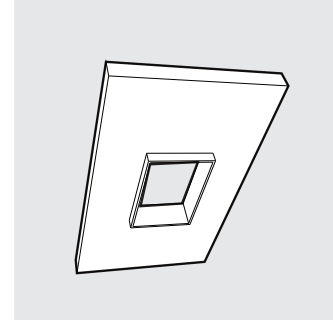
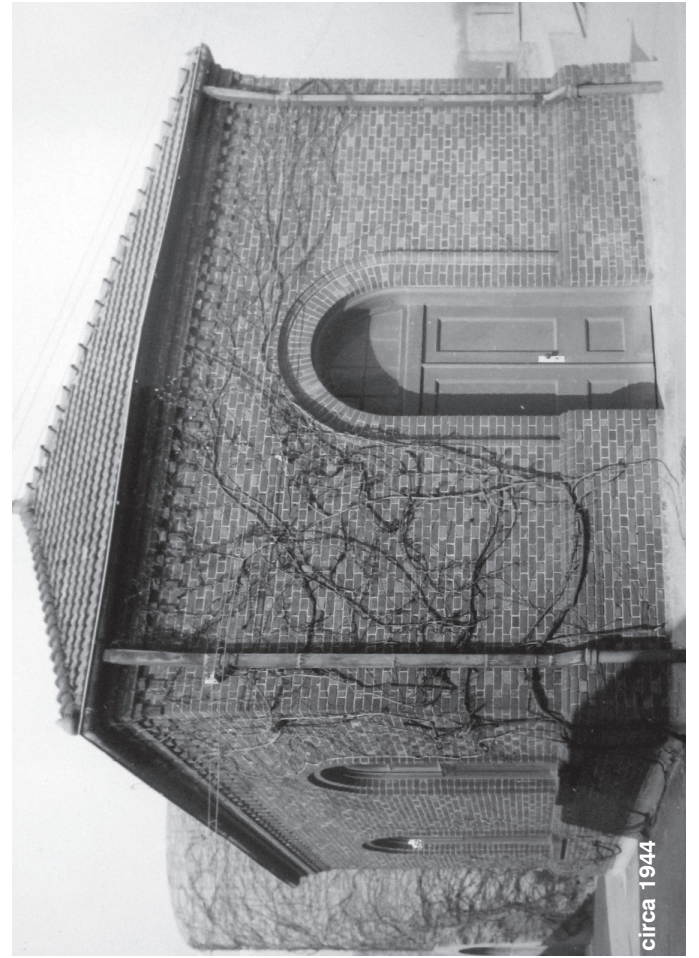


**ELEVATION**



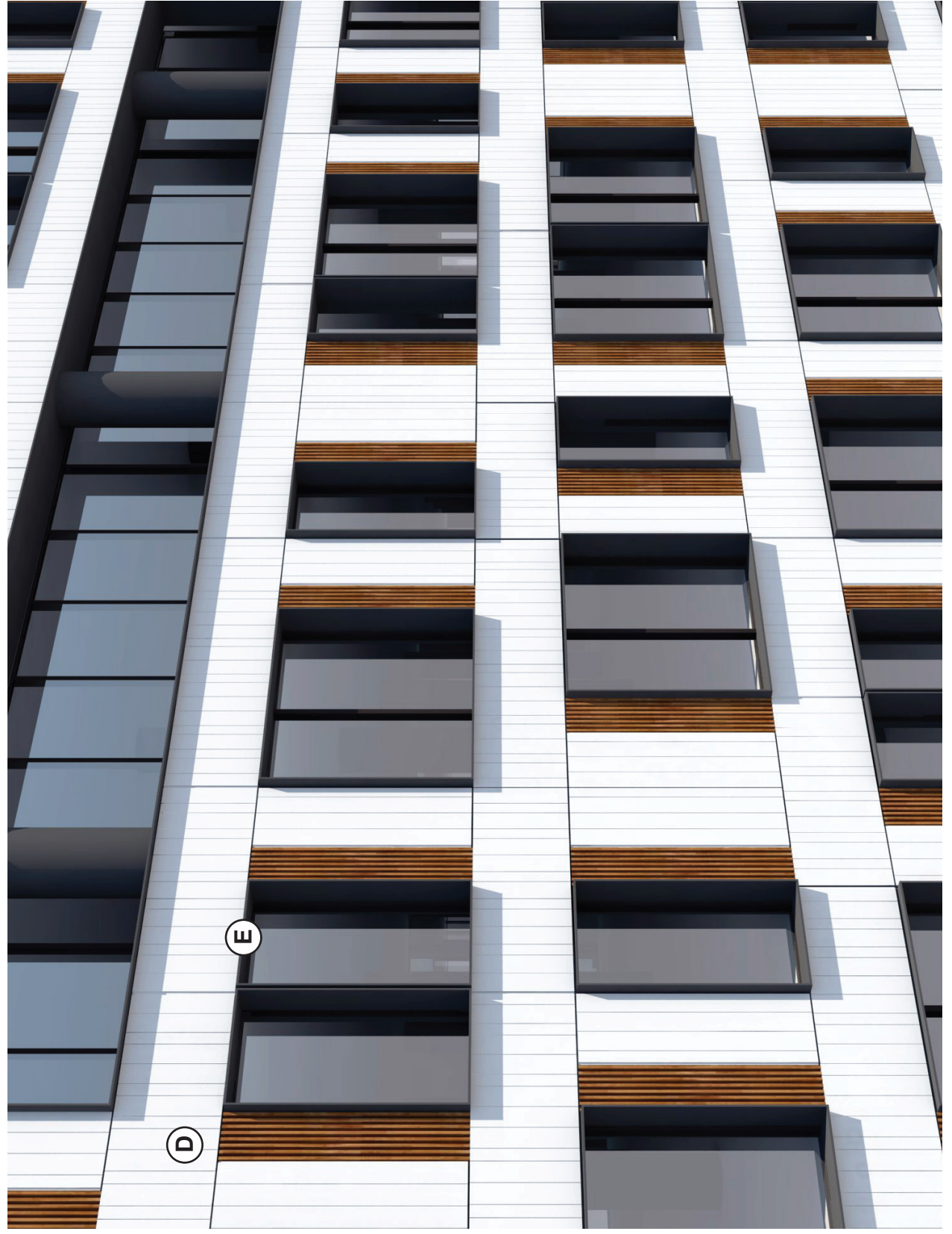
BANDED PATTERN

D



FRAMED OPENING

E



D

E